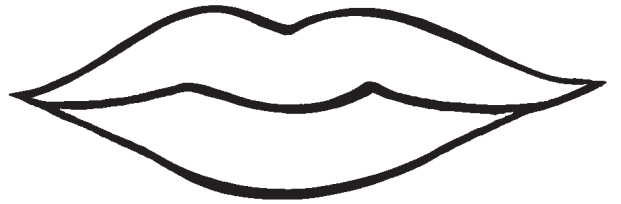
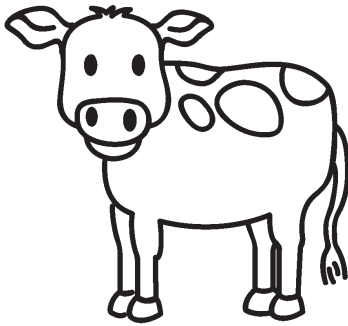




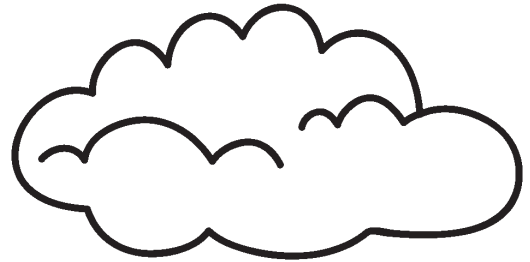
house



mouth



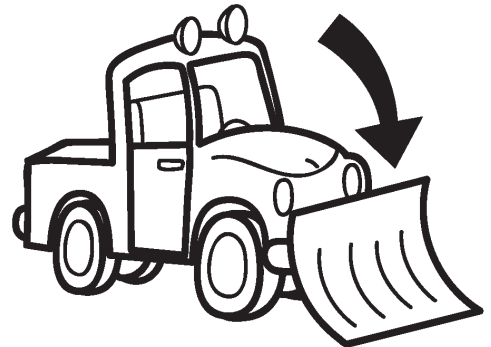
cow



cloud



gown



plow



shout

pout

pound

ground

growl

howl

how

now



brow

brown

clown

sound

hound

prowl

ou

ou

ou

ou

ou

ou

ou

ou

ow

ow

ow

ow

ow

ow

ow

ow




out

ound

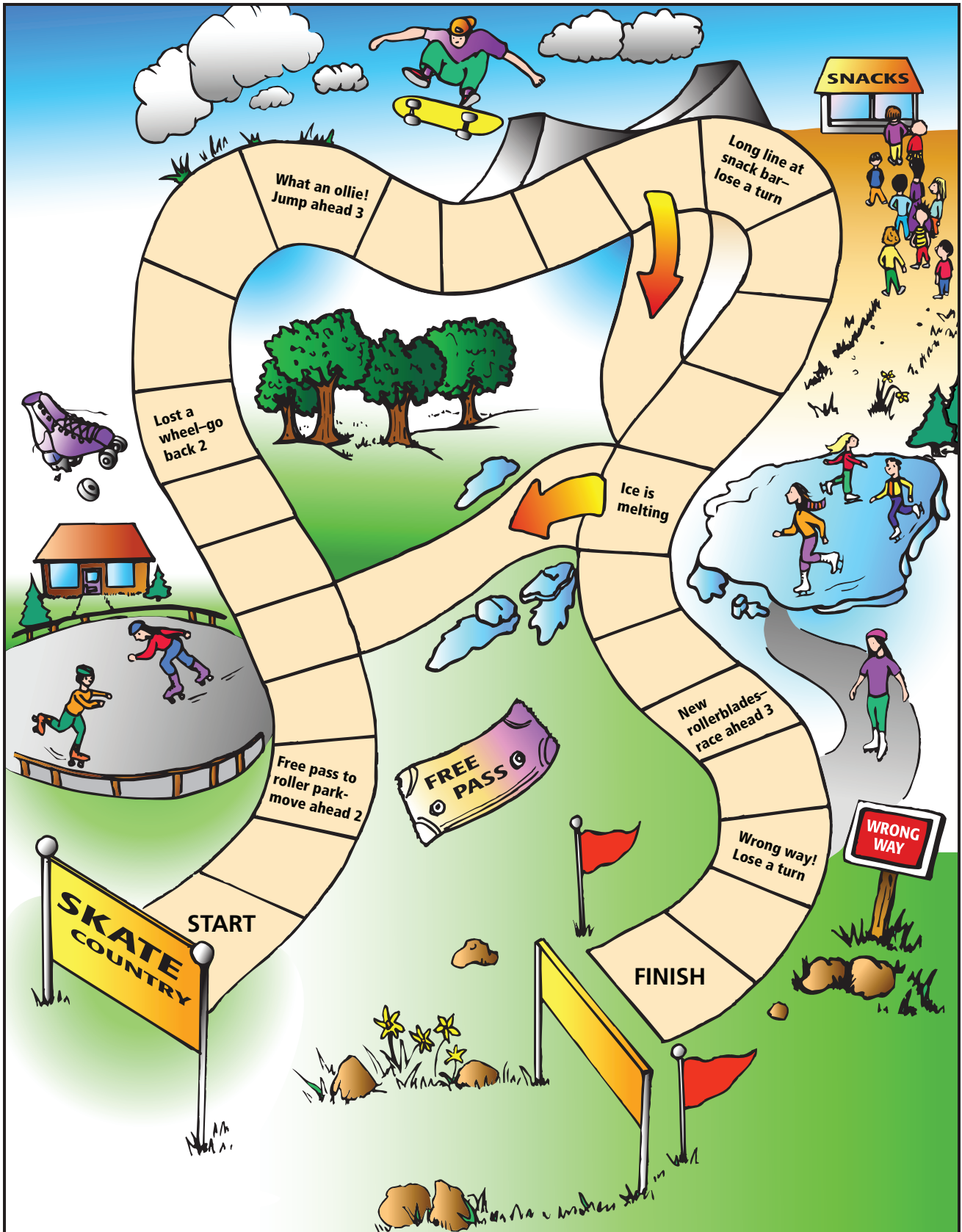
owl

ow

own



s	sh	n	gr
d	h	l	br
cl	p	t	r
d	cr		



<p>1 New words</p>	frown • cloud • scowl found • house • brown grouch • hound
<p>2 Reviewed words</p>	all • wrong • look • saw seen • spoil • smile wise • who
<p>3 New h-f word</p>	around
<p>4 Reviewed h-f words</p>	was • never • or • some over • there • too • look said • come
<p>5 Phrases</p>	howl for the clown such a grouch all around town
<p>6 Sentence</p>	The people sat the clown on a couch.

Letter Workmat

Onset/Rime Workmat

Onset Rime
